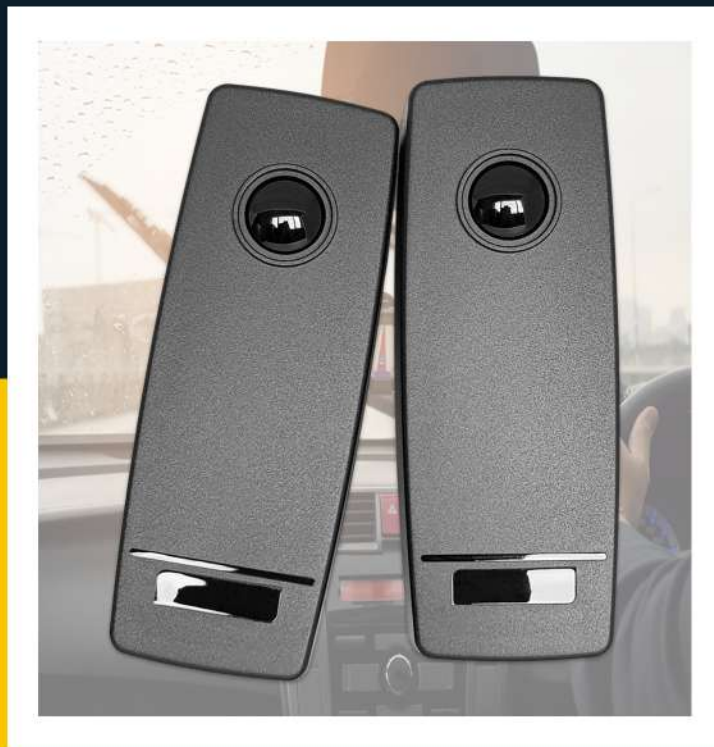


12V/24V (DC/AC)



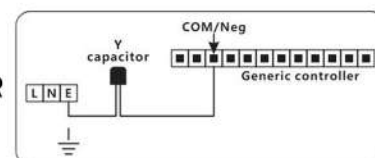
# WIS 30

## PHOTO SENSOR

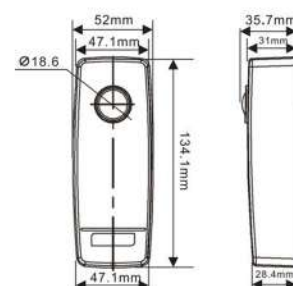
### FEATURES

- ✓ THE TRANSMITTER IS WIRELESS AND BATTERY-OPERATED SAVING TIME AND MONEY
- ✓ METERS OPERATING RANGE-IDEAL FOR ALMOST ANY ENTRANCE 30 .GATE
- ✓ FULLY ANTI-PROOF AND WEATHER-RESISTANT ENCLOSURE FOR GREATER .RELIABILITY
- ✓ TRANSMITTER PROVIDES AUDIBLE FEEDBACK FOR EASY SETUP AND .BATTERY-LOW INDICATION
- ✓ LOW POWER CONSUMPTION THROUGHOUT THE SYSTEM FOR .GREATER EFFICIENCY
- ✓ COMPATIBLE WITH INTRUDER-DETECTION ALARMS FOR ENHANCED .PERIMETER SECURITY
- ✓ QUICK, EASY INSTALLATION WITH BUILT-IN LASER BEAM ALIGNMENT SYSTEM

### CONNECTIONS



### SIZE



TECHNOLOGY PARAMETER	
Power Supply	12-24VAC 12-24VDC
Max.Range up	30 Meters
Operate Temperatur	-200 °C+600 °C
Max.TX working current	<50uA
Max.RX working current	30mA @ 12V DC
Max.Relay contact	Max 500 mA e 48 Vac/dc
IP rate	IP65
Meterial	PC(UV)
Net Weight	160g
Battery using life	≥ 2 years

### INSTALLATON DIAGRAM AND APPLICATION

